

SUPER CORDELIA

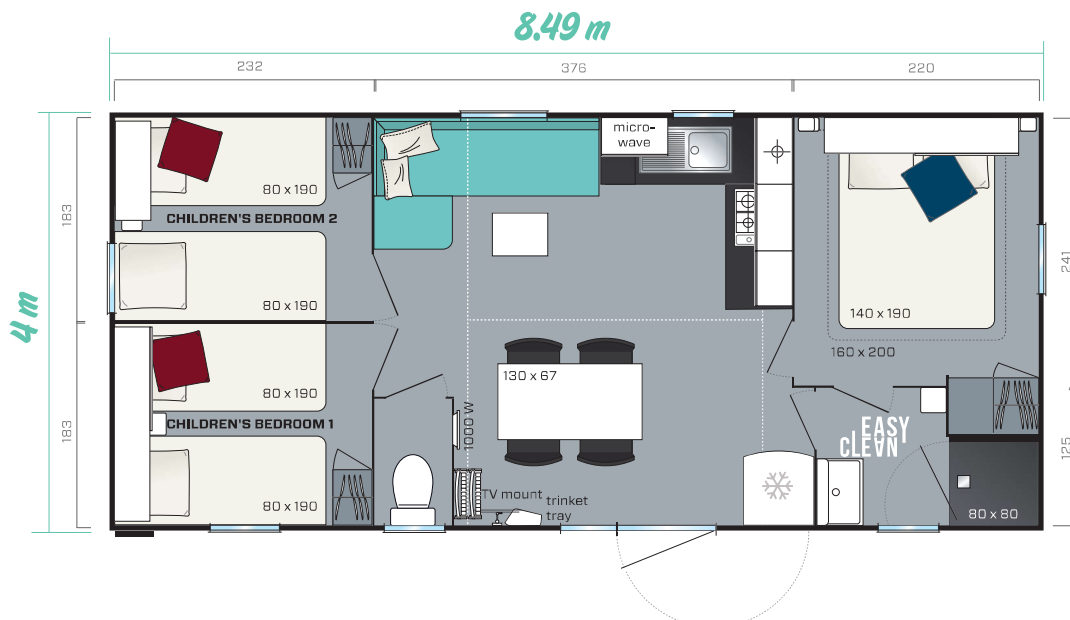
3 Schlafzimmer
6 Schlafplätze
30.50 m²
8.49 x 4 m



Das Modell Super Cordelia präsentiert sich mit der option einer Eukalyptus Frontfassade
Abmessungen über alles. Innengrundfläche. Höhe 3,54 m

Viel Platz und ein erleichterter Durchgang zeichnen dieses geräumige Modell mit 3 großen Zimmern aus. Seine Ergonomie wurde konzipiert, um Geselligkeit zu fördern.

- Küche mit Barelement
- Wohnbereich mit verlängerbarem Esstisch, vom Wohnzimmer trennbar
- Großes Elternschlafzimmer mit Direktzugang zum Bad und zum Ankleidebereich



Standard fittings

- Smoke detector - guaranteed for 10 years
- 100% LED indoor lighting
- 1000 W convector
- 35kg/m³ HR Foam mattress with the OEKO-TEX label.
- High and low vents
- Phthalate-free lino
- Central circuit breaker
- Aerial socket and TV cabling
- Kitchen units on feet with PVC plinths
- Flow reducers on sink and washbasin mixer taps (7 l/min)
- Top-of-the-range, ACS-certified mixer taps
- Natural draught gas boiler with pilot light (14 kW)
- Environmental awareness sticker to encourage ecological behaviour



Kitchen

- Microwave oven compartment
- Deep pan drawer
- White, 4-burner gas hob
- 2-door, 207 L white class A+ fridge-freezer
- Roller blind

Shower room

- Easy Clean shower room that is designed to be durable
- 80x80 cm shower tray with smooth, extra flat floor
- Wall-mounted washbasin with built-in towel rail and shelves
- Modern design corner shelf
- Window with frosted glass for optimal privacy
- Dual volume toilet cistern (3/6 litres)

Living room

- Dining table with fixed anthracite lacquered legs
- TV bracket for any type of screen
- Mirror
- Trinket tray
- Large L-shaped bench seat
- 4 grey in&out folding chairs
- 2 additional folding chairs

Master bedroom

- Shelves in the headboard topped with an overhead cabinet with sliding door
- Adjustable reading lights with integrated on/off switch
- 2 wall-mounted metal bedside tables
- A large hotel-style wardrobe
- 18 slat bed frame with raised legs and 35 kg/m³ HR foam mattress
- Blackout curtain



En-suite shower room with the master bedroom

Children's/guest bedrooms

- Overhead cabinet with sliding door in 1 bedroom; the other bedroom has an open unit
- Metal bedside table to be installed
- Wardrobe at the foot of the bed
- 18 slat bed frame with raised legs and 35 kg/m³ HR foam mattress.
- Blackout curtain

The ideal options

- Convertible bench seat for 2 additional sleeping spaces
- 160 x 200-cm bed
- Mobile partition between the 2 bedrooms

